

REVEALING A CAPTIVATING NEW LOOK IN 2020



MARRIOTT
PRAGUE





IDEALLY LOCATED IN THE HISTORIC OLD TOWN



**MARRIOTT
PRAGUE**

Just a 30-minute drive from Václav Havel Airport Prague, the hotel is the perfect base for those travelling to the Czech Republic's capital city. Situated on the border of ancient streets, Prague Marriott Hotel offers inventiveness, quality and state-of-the-art facilities and is within walking distance of the center's most visited sites.

VÁCLAV HAVEL AIRPORT PRAGUE

16 km / 10.3 miles

MAIN TRAIN STATION

1 km / 0.6 miles

MAIN BUS STATION

1 km / 0.6 miles

PUBLIC TRANSPORT

Metro station (next to the hotel)

Tram stop

MAKING A REMARKABLE FIRST IMPRESSION

A modern hotel lounge with a marble bar, green chairs, and a red leather armchair in the foreground. The bar is a central feature with a white marble top and a wooden base. Behind it, there's a well-stocked bar area with various bottles and glasses. To the left, there are green chairs around a table. In the foreground, a red leather armchair is positioned next to a small round table with a plate of snacks and two glasses of beer. The overall atmosphere is warm and sophisticated.

HOTEL SERVICES

- » Private check in area available for groups
- » M Club Lounge
- » 24-hour reception service
- » Garage parking
- » 24-hour business center
- » Guest laundry
- » 24-hour room service
- » Fitness center with 24-hour access
- » Concierge



AN INGENUOUS BLEND OF SMART AND STYLE

ADDITIONAL ROOMS AVAILABLE AS OF LATE 2020

Renowned for their generous footprint, the collection of 416 guestrooms and suites, including a high proportion of versatile Double Double setups, offer a sleek and calm backdrop. Modern lifestyles are enhanced by an integral approach that deftly blends work and relaxation, through practical connection points, comfortable seating and ambient lighting.

NUMBER OF FLOORS 7

NUMBER OF ROOMS 416 (123 newly built in 2020)

DOUBLE DOUBLES 132

SUITES 47

MINIMUM ROOM SIZE 27 m² / 290 ft²



Deluxe Double Double Guest Room



New Deluxe King Guest Room

ALL ROOMS FEATURE

- » Individual climate control
- » Complimentary water
- » Large flat-screen TV
- » EU and US plugs
- » Minibar
- » USB connection
- » In-room safe deposit box
- » Telephone
- » Internet access



MARRIOTT BONVOY™
EVENTS

A TIMELESS AND POLISHED HOST

**EXTENDED CONFERENCE FLOOR
AVAILABLE AS OF JUNE 2020**

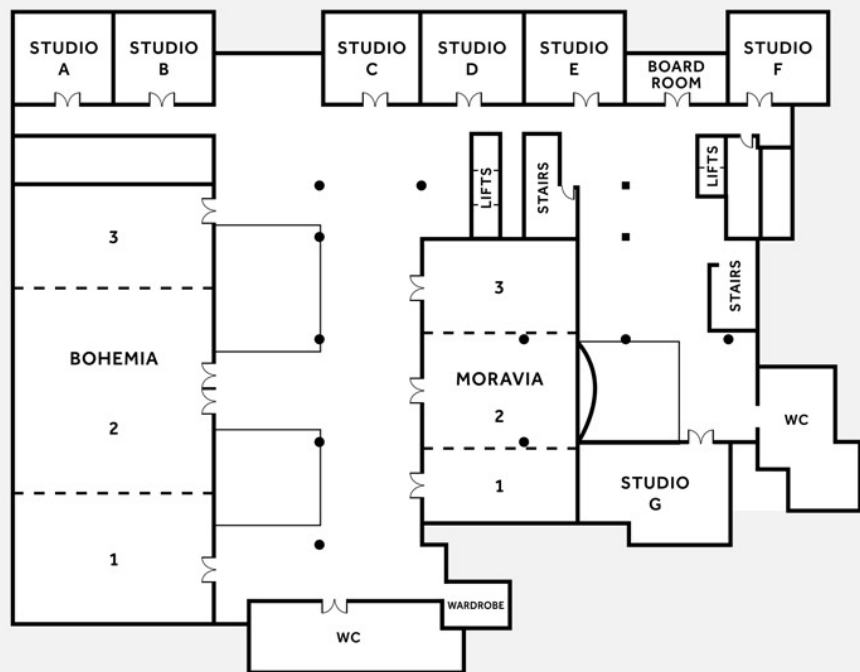
Spanning 2,000m² of creative space across one mezzanine level, the expertly-designed floorplan includes a co-working centerpiece, breakout concept with food stations, two generously-sized and adaptable conference venues hosting up to 319 attendees, as well as a choice of smaller studios and boardrooms.

THE PLACE TO MEET IN PRAGUE

- » Adaptable pre-function area with flex connect table & coffee stations
- » Elegant and versatile rooms suitable for conferences, receptions & other social events
- » Grand Bohemia Ballroom with adjustable ambient lighting for up to 319 attendees
- » Seven breakout studios with direct daylight, integrated coffee stations, large TV screens with wireless connectivity and writable walls
- » Boardroom ideal for small meetings or events for up to 8 people



INTELLIGENT MEETINGS OFFERING



Meeting Rooms	Area (m ²)	Ceiling height (m)	Dimensions L x W (m)	Natural daylight	Cabaret 6 pax/table	Theatre	Classroom	Boardroom	U-Shape	Cocktail	Banquet
Bohemia 1	150	3,2	14,3 x 10	no	54	150	96	49	43	120	90
Bohemia 2	240	3,2	14,3 x 15,9	no	72	300	170	86	70	250	150
Bohemia 3	117	3,2	14,3 x 8	no	48	120	72	46	40	100	80
Bohemia 1 + 2 + 3	507	3,2	14,3 x 33,8	no	192	319	319	130	114	319	319
Bohemia 1 + 2	390	3,2	14,3 x 25,9	no	144	319	270	100	88	319	240
Bohemia 2 + 3	357	3,2	14,3 x 23,9	no	132	319	240	100	88	319	230
Moravia 1	68	2,8	12 x 5,6	no	30	80	45	30	24	70	40
Moravia 2	109	2,8	12 x 9,1	yes	36	110	60	38	30	90	50
Moravia 3	87	2,8	12 x 7,3	no	30	90	45	30	24	70	50
Moravia 1 + 2 + 3	264	2,8	12 x 22	yes	84	141	141	66	60	141	141
Moravia 1 + 2	177	2,8	12 x 14,7	yes	66	141	90	46	40	141	110
Moravia 2 + 3	196	2,8	12 x 16,4	yes	66	141	99	46	40	141	120
Studio A	56	2,8	6,4 x 7,6	yes	18	29	27	24	17	29	29
Studio B	54	2,8	6,4 x 7,6	yes	18	29	27	24	17	29	29
Studio C	54	2,8	6,4 x 7,6	yes	18	29	27	24	17	29	29
Studio D	54	2,8	6,4 x 7,6	yes	18	29	27	24	17	29	29
Studio E	54	2,8	6,4 x 7,6	yes	18	29	27	24	17	29	29
Studio F	54	2,8	6,4 x 7,6	yes	18	29	27	24	17	29	29
Studio G	68	2,8	12 x 5,6	no	35	48	27	24	27	70	50
Boardroom	24	2,7	5,6 x 3,8	yes	-	-	-	8	-	-	-



CONTEMPORARY AND ERGONOMIC DESIGN



HONEST AND NATURAL CUISINE IN NEW SIGNATURE RESTAURANT

A genuine host with a commitment to minimize carbon footprint, its future-forward mindset embraces locally-sourced, seasonal produce to create Czech and international dishes. Open-plan and bright, the theatre kitchen concept reflects a casual, artisanal approach with a

menu that combines quick business lunches, seasonal-snacks and comforting suppers. The warm, convivial ambience extends to the lounge bar, where delicious food is paired with a selection of craft beer and locally inspired drinks.



REFINED EXCLUSIVITY IN THE M CLUB LOUNGE

Reserved for Marriott Bonvoy members and Executive guests, this beautifully-crafted space is the most upscale club offering in Prague. Open 24/7, the lounge serves complimentary drinks and fine food throughout the day and evening, from breakfast

and morning snacks to afternoon canapés and nightly treats. Complemented by an inspired à la carte menu, it is a sophisticated retreat for business meetings, quiet moments and leisurely catch-ups.

LOBBY BAR

WARM AND CONVIVIAL AMBIENCE





THANK
YOU



MARRIOTT
PRAGUE

PRAGUE MARRIOTT HOTEL

V Celnici 8 • 110 00 Prague 1

Czech Republic

INDIVIDUAL RESERVATIONS

prague.reservations@marriott.com

+420 222 888 822

EVENT BOOKING CENTER

prague.salesoffice@marriott.com

+420 222 888 860

 marriottprague.com

 [marriottprague](https://www.facebook.com/marriottprague)

 [marriottprague](https://www.instagram.com/marriottprague)